

Aria Cohousing



aria
COHOUSING



Unit Floor Plans & Finish Selections

Date revised: 05/22/2017

Unit 305 – Third Floor

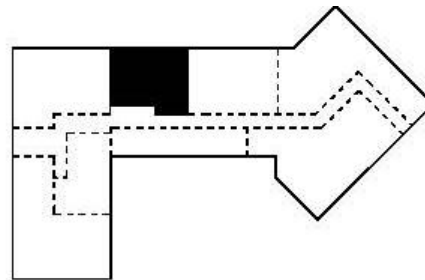
BED/BATH
1 BR/ 1 BA

SQ FTG
683 SF

UNIT PRICE
\$280,000

HOA/MONTH
\$246.64

ADDITIONAL
AMENITIES
Walk-In Closet
Soaker Tub
Shower Niche



THIRD FLOOR KEY PLAN

Architectural plans, materials, elevations, and floor plans are approximate and are subject to change without notice. All dimensions and square footages are approximate, may vary depending on how measured, and are subject to change at the discretion of the developer and should not be relied upon when making a decision with regards to the unit.

Unit 305 – Finish Selections

Cabinets: Kitchen/Bath



Bellmont 1600 Series
Terra- Drift Wood (Light)

Countertop: Kitchen/Bath



Formica Solid Surfacing
782 Luna Weather

Shower and Tub Surround



Arizona Tile: Subway White Glossy

Wood Floor: Kitchen/Living



Kährs: Ash Vailla

Bath Floor



Core Elements
Tokyo Vinyl

Carpet: Bedroom/Closet



Royalty – Cedar Grove
Cool Gray

Unit 305 – Stainless Steel Kitchen Appliances



GE Appliances

GE® 30" Free-Standing Electric Range

Approx Dimensions (HxWxD):
47 in X 29 7/8 in X 28 in

- 9"/12" Dual Element - Two heating elements in one offer flexibility
- Fast Preheat - Make hot meals in a hurry with less time preheating
- Fifth Element Warming Zone - Provides low heat capability for foods
- 6"/9" Power Boil Element - Produces rapid, powerful heat.

GE Appliances

GE® 1.7 Cu. Ft. Over-the-Range Sensor Microwave Oven

Approx Dimensions (HxWxD):
16 1/2 in X 29 7/8 in X 15 in

- 1.7 cu. ft. capacity - 1000 watts (IEC-705 test procedure)
- Sensor cooking controls -
- Automatically adjusts time and power
- Auto and time defrost – Defrosting times and power levels are programmed automatically or manually for optimal results
- Recessed turntable with on/off - Controls turntable operation

GE Appliances

GE® Hybrid Stainless Steel Interior Dishwasher with Front Controls

Approx Dimensions (HxWxD):
34 in X 23 3/4 in X 24 in

- Bottle Jets - Clean hard-to-reach areas inside tall items with dedicated jets integrated into the upper rack that shower water deep inside
- Piranha™ hard food disposer with removable filter - To ensure consistently clean items, blade rotates at 3,600 RPM to pulverize food particles and helps to prevent large particles from clogging the wash arms

Unit 308 – Third Floor

BED/BATH

2 BR/ 2 BA

SQ FTG

1,345 SF

UNIT PRICE

\$470,000

HOA/MONTH

\$485.70

ADDITIONAL AMENITIES

Study

Walk-In Closets

Corner

Shower Glass Euro

Soaker Tub

Shower Niche

Skylight

LED Under-Cab Lighting



THIRD FLOOR KEY PLAN

Architectural plans, materials, elevations, and floor plans are approximate and are subject to change without notice. All dimensions and square footages are approximate, may vary depending on how measured, and are subject to change at the discretion of the developer and should not be relied upon when making a decision with regards to the unit.

Date revised: 12/1/2016

Unit 308 – Finish Selections

Cabinets: Kitchen/Bath



Bellmont 1600 Series
Terra- Carbon (Brown)

Countertop: Kitchen/Bath



Caesarstone
6600 Nougat

Shower and Tub Surround



Arizona Tile: Subway White Glossy

Wood Floor: Kitchen/Living



Kährs: Ash Vaila

Carpet: Bedroom/Closet



Royalty – Cedar Grove
Cool Gray

Floor Tile: Bath



MS Int – White Porcelain Tile

Unit 308 – Slate Kitchen Appliances



GE Appliances

GE® 30" Free-Standing Electric Convection Range
Approx Dimensions (HxWxD):
47 in X 29 7/8 in X 28 in

- True European Convection with Precise Air - Enjoy perfectly even results without turning the pan
- 6"/9"/12" 3600W Power Boil – Pots and pans fit perfectly on the flexible heating element
- Bridge Zone - Cook griddle favorites from the convenience of your range
- Fifth Element Warming Zone - Provides low heat capability for foods

GE Appliances

GE® 1.9 Cu. Ft. Over-the-Range Sensor Microwave Oven
Approx Dimensions (HxWxD):
16 1/2 in X 29 3/4 in X 15 1/2 in

- 1.9 cu. ft. capacity - 1100 watts (IEC-705 test procedure)
- Sensor cooking controls - Automatically adjusts time and power
- Power Saver mode - Delivers a reduction in power consumption
- USDA MyPlate menu - Offers healthy pre-programmed food options and recipes

GE Appliances

GE® Stainless Steel Interior Dishwasher with Hidden Controls
Approx Dimensions (HxWxD):
34 in X 23 3/4 in X 24 in

- Bottle Jets - Clean hard-to-reach areas inside tall items with dedicated jets integrated into the upper rack that shower water deep inside for the ultimate clean
- Easy touch adjustable upper rack with 2 Stem Safe shelves - Quickly adjust the upper rack 2 inches up or down to accommodate tall glassware and 10 1/2" plates with plenty of room in the bottom rack for large platters and cookie sheets

Unit 309 – Third Floor

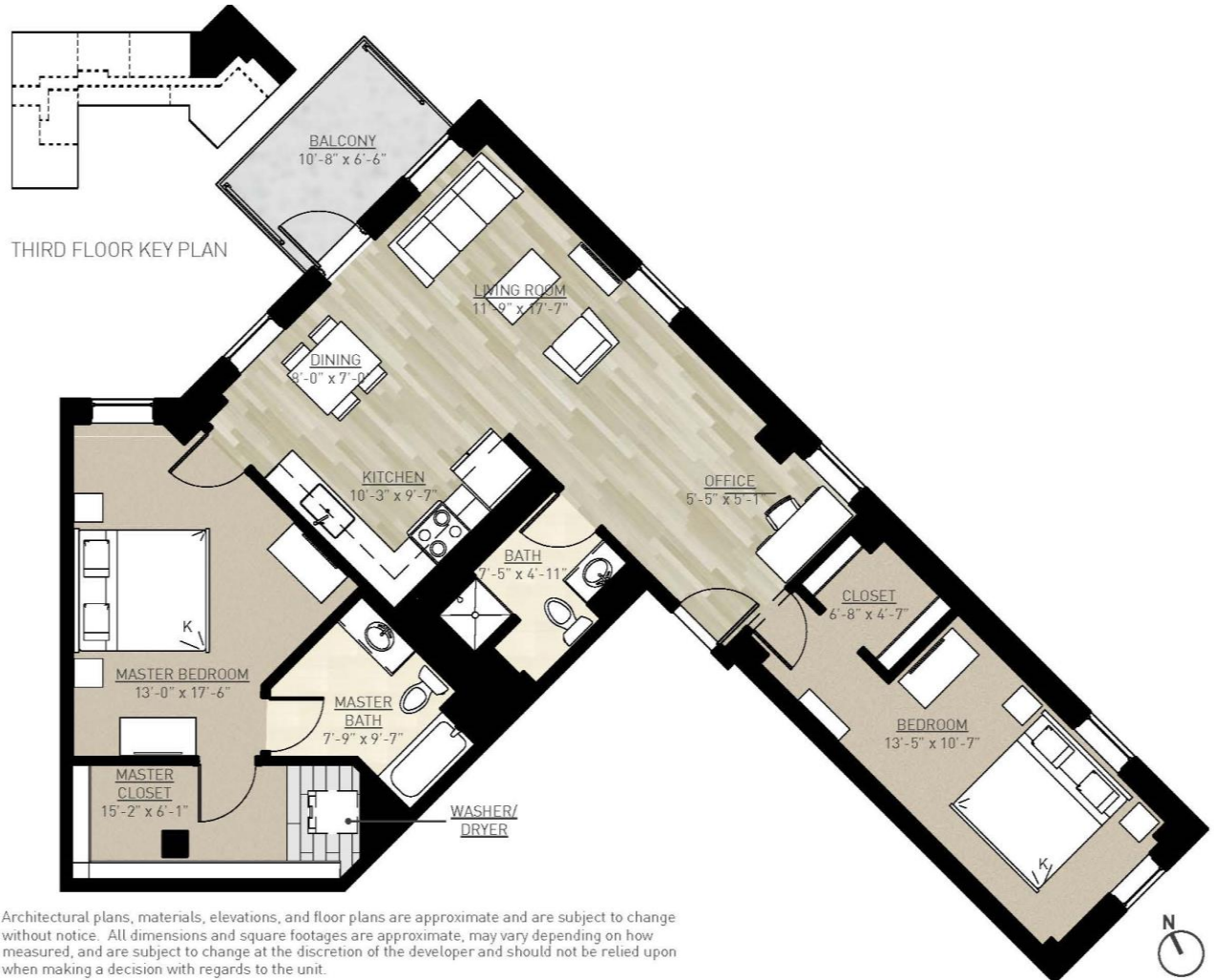
BED/BATH
2 BR/ 2 BA

SQ FTG
1,182 SF

UNIT PRICE
\$450,000

HOA/MONTH
\$426.84

ADDITIONAL
AMENITIES
Walk-In Closets
Corner
Balcony
Soaker Tub
Shower Niche
Shower Glass Euro



Architectural plans, materials, elevations, and floor plans are approximate and are subject to change without notice. All dimensions and square footages are approximate, may vary depending on how measured, and are subject to change at the discretion of the developer and should not be relied upon when making a decision with regards to the unit.

Unit 309 – Finish Selections

Cabinets: Kitchen/Bath



Bellmont 1600 Series
Terra- Charcoal

Countertop: Kitchen/Bath



Caesarstone
6270 Atlantic Salt

Shower Surround: 2nd Bath



Arizona Tile: Subway White Glossy

Wood Floor: Kitchen/Living



Kährs: Ash Vaila

Carpet: Bedroom/Closet



Royalty – Cedar Grove
Cool Gray

**Floor Tile + Tub Surround:
Master Bath**



MS Int – White Porcelain Tile

Unit 309 – Stainless Steel Kitchen Appliances



GE Appliances

GE® 30" Free-Standing Electric Range

Approx Dimensions (HxWxD):
47 in X 29 7/8 in X 28 in

- 9"/12" Dual Element - Two heating elements in one offer flexibility
- Fast Preheat - Make hot meals in a hurry with less time preheating
- Fifth Element Warming Zone - Provides low heat capability for foods
- 6"/9" Power Boil Element - Produces rapid, powerful heat.

GE Appliances

GE® 1.7 Cu. Ft. Over-the-Range Sensor Microwave Oven

Approx Dimensions (HxWxD):
16 1/2 in X 29 7/8 in X 15 in

- 1.7 cu. ft. capacity - 1000 watts (IEC-705 test procedure)
- Sensor cooking controls -
- Automatically adjusts time and power
- Auto and time defrost – Defrosting times and power levels are programmed automatically or manually for optimal results
- Recessed turntable with on/off - Controls turntable operation

GE Appliances

GE® Hybrid Stainless Steel Interior Dishwasher with Front Controls

Approx Dimensions (HxWxD):
34 in X 23 3/4 in X 24 in

- Bottle Jets - Clean hard-to-reach areas inside tall items with dedicated jets integrated into the upper rack that shower water deep inside
- Piranha™ hard food disposer with removable filter - To ensure consistently clean items, blade rotates at 3,600 RPM to pulverize food particles and helps to prevent large particles from clogging the wash arms